



WESTERN BOULEVARD PRESBYTERIAN CHURCH  
 4900 Kaplan Drive, Raleigh NC 27606  
 Phone: 919-851-4713

Published in the Interest of  
 CHRIST - CHURCH - COMMUNITY  
[www.wbpresbyterian.org](http://www.wbpresbyterian.org)

VOLUME 51, No. 9 September 2014

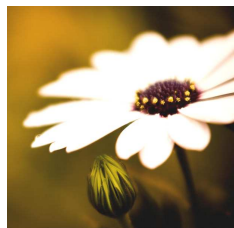
## New Beginnings!

### Rally Day - September 7

9:00 a.m.—Scrumptious Hot Breakfast  
 9:30 a.m.—Sunday School Kick-Off  
 10:30 a.m.—Morning Worship  
 3:30 p.m.—Social Justice Forum  
 5:00 p.m.—@The Table Worship  
 6:30 p.m.—Youth Fellowship Kick-Off

### Wednesday Night Live Begins September 10

*Join in the fellowship, fun, and good food...*  
 Read inside and check our website for details  
 about exciting fall programs!



### Choirs Start Back

**Chancel Choir** rehearsals begin August 27, 7:30 p.m., Music Room  
**Chancel Ringers** rehearsals begin September 9, 7:00 p.m., Sanctuary

### CPR/AED Training

Plan to take time to learn important lifesaving skills!  
 September 13, 9 a.m.-1 p.m. *or*  
 September 28, 1 p.m.-5 p.m.

### Check Out Our Website

[www.wbpresbyterian.org](http://www.wbpresbyterian.org)

Please visit our website for more exciting news, up to date information and an online calendar complete with community events at WBPC!



### Children's Chapel Resumes

Another exciting year of Children's Chapel resumes on September 14!

### Fall Bible Study Opportunity

**Wednesday Mornings**—*Women of the Bible*, by Jean Syswerda, shared facilitation, 9:30-11:00 a.m., parlor

**Thursday Nights in October**—*Living the Kingdom*, taught by Robert Owens, October 9, 16, 23, and 30, 6:30-7:30 p.m., parlor

### Presbyterian Women

Please join us the 2nd Tuesday of each month at 10:00 a.m. in the parlor.

**50+** Friday, September 19  
 9:00 a.m. Pam's Farm House  
 (Presentation after in the parlor)

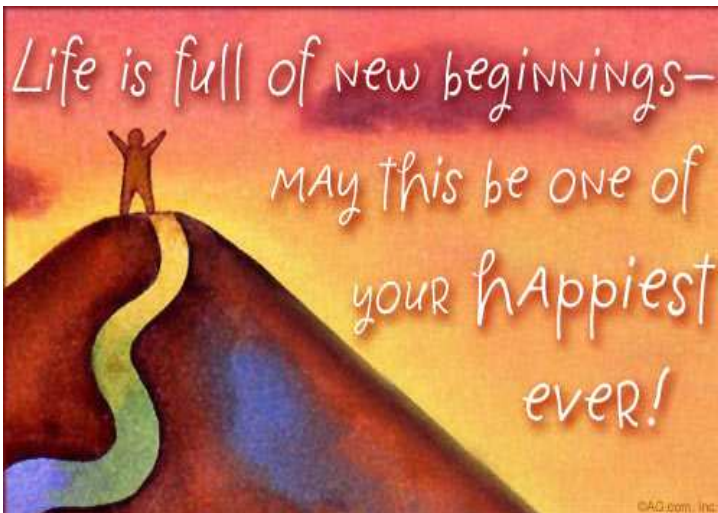
## A Time of New Beginnings

Although we celebrate the start of a new year each January, September is another time of the year in which we celebrate new beginnings. Children, youth, and young adults begin a new year of learning, and teachers a new year of teaching and welcoming new students. Many of us have taken time off during the summer to rest, rejuvenate and recharge, and enter the fall with a sense of newness and beginning again. Churches celebrate the beginning of a new programmatic year on Rally Day. September is filled with newness and new beginnings.

In the book of Ecclesiastes, we are reminded, *"For everything there is a season, and a time for every matter under heaven."* As we prepare for a big change of season, I invite you to consider how God is bringing new beginnings to you in your life. I also invite you to consider how you can make a new beginning in your life at WBPC. Are you ready to strengthen your habit of regular worship? If you're not already active in Sunday School, will you choose to make Christian education a high priority in your life and your family's? Is now a good time for you to try a new kind of volunteer service? Are you ready to incorporate a Bible Study into your faith life?

I encourage you to take advantage of this season of new beginnings to recharge your faith walk. Come celebrate and participate in all the new beginnings at WBPC this fall. Grow in faith and try something new!

Excitedly beginning again with you,  
*Betty*



## Labor Day Weekend Intergenerational Fellowship Sunday, August 31 at 9:30 a.m.



On Sunday, Aug. 31, we will have a fellowship time in the Fellowship Hall, from 9:30-10:15 a.m. All are invited to "chat and chew" as we enjoy coffee, juice, muffins, and one another's company.

## Rally Day - September 7

A new year of Christian Education at WBPC kicks off on Rally Day, September 7. Join us for a delicious hot breakfast at 9:00 a.m. cooked by our Men of the Church. Following breakfast, much information will be shared regarding Sunday School classes, Wednesday Night Live, and much more. Mark your calendars and make plans to recharge your faith walk this Rally Day as we celebrate our *New Beginnings!*

## @The Table

Sundays at 5:00 p.m.

WBPC Fellowship Hall

Grab a cup of coffee, and feast with us in this coffeehouse style worship.



## The Rev. Dr. Robert Weingartner

Preaching in Morning Worship Sept. 28

Rob Weingartner has served as executive director of The Outreach Foundation since 2002. Outreach engages Presbyterians and global partners in proclaiming the good news of Jesus Christ, encouraging mission support and building mission relationships. His ministry takes him across the country and around the world, including Israel/Palestine August 27-September 10. A graduate of Pittsburgh and Princeton seminaries, Rob pastored congregations in Indiana and Ohio for twenty years prior to joining Outreach. Previously, he served on the PC(USA) General Assembly Council and Worldwide Ministries Committee and the boards of New Wilmington Mission Conference and Presbyterian Global Fellowship. Rob is an incredibly gifted preacher and speaker and we look forward to his inspiring witness on September 28.

## Fall Wednesday Night Live Begins!

Join your church family for fun and fellowship on Wednesday evenings. The fall session of Wednesday Night Live begins on September 10. All programs are designed to be inter-generational and fun. Invite your neighbors and friends and plan to be present! Dinner is served from 5:45-6:30 p.m. with activities beginning at 6:30 p.m. Activities end by 7:30 p.m. so choir members can make it to choir and families have time for other evening activities.

Join in the fellowship, fun and good food. Several highlights for this fall will be our youth reporting on their Mission Trip to New Jersey and a very special crock-pot and dessert cook-off. Everyone present will be able to vote for their favorite crock-pot dish and dessert. Plan now to bring something special to share that evening. Santi Matthews, administrative assistant at WBPC, will lead the group in a special prayerful craft one evening.

Sign up on the Sunday attendance form or call or e-mail the church office by noon on Monday the week of the event so that adequate food can be secured. Reservations are required for meal. You may attend the program at any time without a reservation. Vegetarian options are available. Cost of meal \$7.00 per person; children 6-9 \$5.00; children 5 and under free.

### Fall Wednesday Night Programs:

#### **September 10: Pictionary**

*Chick-Fil-A*

#### **September 17: Square Dancing**

*Pittman: Chicken, Rice, Veggies, Bread*

#### **September 24: Tri-Force Jump Rope**

*Pittman: Taco/Salad Bar*

#### **October 1: Mission Trips**

*Pittman: Brisket, Salad, Butterbeans & Corn, Bread*

#### **October 8: Table Games**

*Crock-Pot Cook-Off/Bake-Off*

#### **October 15: Unashamed**

*Pittman: Spaghetti, Salad, Bread*

#### **October 22: Loyalty Night**

*Chicken Breast, Salmon, Salad, Veggies, Dessert*

#### **October 31: Friday! Halloween Gathering**

*Free Pizza and Salad*

#### **November 5: Prayer Craft**

*Pittman: Beef Tips and Rice, Salad, Bread*

Check out our website [www.wbpresbyterian.org](http://www.wbpresbyterian.org)

to find updated information  
about programs and meals.

## 50+ September Breakfast

50+ will meet for breakfast at 9:00 a.m. on Friday, September 19 at Pam's Farm House Restaurant (5111 Western Blvd.)

After breakfast, we will adjourn to the church's parlor where Hudson Emerson, using the photos made during its construction, will lead a review of how our education building came to be.

### Presbyterian Women—Magdalene Circle

Presbyterian Women 2014-15 will meet on the 2nd Tuesday of each month for Magdalene Circle. We start at 10:00 a.m. with business and prayers, then a Horizons Bible study: "Reconciling Paul: A Contemporary Study of 2 Corinthians" by Elizabeth Hinson-Hasty, led by Lori Grippo. Afterward we usually travel to a nearby restaurant for lunch and fellowship together. Please join us in the parlor!

### Youth Group Kick-Off!

Hello all, we are beginning the youth year on Rally Day, September 7 with our usual Sunday night meeting time resuming, 6:30-8:00 p.m. This Rally Day meeting we will be a potluck and informational/game session. Please bring a covered dish to share, and either your running shoes or lawn chair at your discretion. We look forward to another great year together.

—Dave & Mollie

### Children's Chapel Resumes

#### Sunday, September 14!

Another exciting year of Children's Chapel will be starting on September 14. Children who are 4 years old by August 31 thru 2nd grade are invited to join us each Sunday (except the first Sunday of the month) for songs, stories and activities. Following the Message for Children, an usher will escort children from the back of the sanctuary to the Children's Chapel (211) in the Ed Building. Pick up your child after services. Please contact Judy Shelton with questions at [jshelton1@nc.rr.com](mailto:jshelton1@nc.rr.com) or 919-859-3107. Thank you to the following friends for volunteering to help this year!

#### Storytellers

*Phyllis Fann, Allisen Fischer, Beth Milchuck, Carol Parker, Judy Shelton, Suzanne Smith,*

#### Greeters

*Evan Barnette, Katherine Anh Clapp, Mary Todd Earnhardt, Carolyn Esbenshade, Noah Milchuck, Grace Odum,*

#### Materials Coordinator

*Cookie Littlefield*

## SafeChild Reminder

Anyone working with children and/or youth at WBPC (Sunday School, youth, nursery volunteers, etc.) must be trained on our SafeChild Policy. Please email Blythe ([blytheclifford@gmail.com](mailto:blytheclifford@gmail.com)) to schedule a training. If you have been trained on SafeChild already, you do not have to re-take the class, but you do need to annually recommit yourself to the protection of children at WBPC, so please re-read the policy available on the Church website, and then download and sign the Covenant Form. Covenant Forms are due to the Church office by Oct.1 for all working with children and/or youth this fall. Email Blythe with questions.

## Haiti Scholarships Needed

Chedlin Justinvil, Director of the Yahve Jire Children's Foundation, in Haiti just informed us that ALL of the kids at the Home passed their national exams (like our standardized testing) thus enabling them all to move up a grade in school. This is great news and demonstrates how valuable our support is in providing a safe home for them to live, good nutrition, and the means to go to school. As in the USA, the only real means of a future in Haiti is by being educated. The kindergarten and elementary aged children are educated at the Home and our support helps to pay the salary for the teaching staff. There are no free, public schools available in Haiti. The Middle and High School students attend a private Catholic school. There are 10 students this year needing assistance with education scholarships, up from 5 last year!

The cost per child is \$1800.00/year. Won't you consider helping? If so, please put on your check made out to WBPC: Haiti Scholarship. School starts September 8th, but donations are accepted ongoing. We will send a check the end of September and again in January. Merci Anpil! Thanks a lot!

Tuition for the year	\$700
Uniforms and shoes for the year	200
School supplies for the year	300
Transportation and lunch	600
<b>TOTAL</b>	<b>\$ 1,800</b>

## What Are You Waiting For?

It is the start of September and we have been explaining the benefits of CPR training for the last five months. Well, folks, the time is now. Classes are four hours in length, cost \$40 per person with Youth scholarships available through the Endowment Fund, I have a loaner book library available and you have two different days to choose from: Saturday or Sunday. You may register by contacting Joyce Smith at [JoyceSmithNC@nc.rr.com](mailto:JoyceSmithNC@nc.rr.com) or call 919-816-9157. If anyone is interested in assisting Joyce as the host of the class (no CPR training required, just good muscles), please contact her. Come join us on Saturday, September 13 from 9:00 a.m. to 1:00 p.m. or Sunday, September 28 from 1:00 p.m. to 5:00 p.m. We are very blessed to have an Automated External Defibrillator on site and one of the requirements with Wake County EMS for keeping the device on campus is that we keep people trained in the use of CPR and the AED equipment. If we do not keep current on our training, then our defibrillator will have to be removed. Please don't let that happen. Learn how to help save a life in four hours. We're waiting to hear from you!

## WBPC Endowment Fund

The endowment fund was established by the session in 1998 with funds received from the sale of the church manse, as well as undesignated contributions made in memory or honor of church members. The fund was set up to invest contributions and spend the earnings primarily on mission work of the church. The original investment of \$36,515.94 has grown through contributions and earnings over the years and had a value of \$75,168.37 as of June 30, 2014. This change in value reflects a total of \$63,488.13 in contributions and earnings on investments, while a total of \$24,835.70 has been disbursed for mission work of our church. This fund allows for your donations to be invested in a way that provides for perpetual mission work without spending your original investment. It is also a great way to include the ongoing work of the church in your will. If you are interested in receiving further information, please contact the church office for a list of endowment fund committee members.

## Endowment Fund Requests

WBPC's Endowment Fund currently has \$5,000 available for utilization to support the benevolent, education, and mission work of the church. These funds cannot be used for the operation of the church or its regularly budgeted programs. Requests for these monies should be made by Sept. 15, 2014. If you would like an Endowment Fund Request form or have any questions, please contact the church office: 919-851-4713 or [santi@wbpresbyterian.org](mailto:santi@wbpresbyterian.org)

# HAPPY BIRTHDAY

Kevin Fischer	4
Janis Guzzo	4
Isaiah Grady	9
Frank Fleming	10
Taylor Cleveland	11
Andrew Craven	12
Phyllis Fann	13
Samantha Boshoff	14
Peggy Smith	14
Jonathan Taylor	14
Jessup Whitehurst	14
Jonah Milchuck	15
Stephen Cummings	16
Morgan Padgett	16
Blythe Clifford	17
Bruce Grady	18
Lou Gene Hemphill	18
Mark Wessell	20
Les Parnell	23
Anna Boshoff	24
Jean Godfrey	25
Bill Hamner	25
Bobbie Reese	27
Susan Bennett Assa	28
Armanda Ndepkeu	29
John Clapp	30
Alaina Craven	30

## PRAYER CONCERNS

**MEMBERS:** Joyce Barbour, Louise Beck, Kaye Byrd, Eva Reopelle, John and Mary Jane Roberts, Dot and Jimmie Smith, Kenny Stott, Geneva Thigpen

**FAMILY/FRIENDS:** Carl Council (father of Kay Crowder), Alton Emanuel (cousin of Robert Owens), Ben Glasgow (brother of Lori Grippo), Barbara Mackie (mother of Lynne Mitchell), Tim Meece (uncle of Chad Barnette), Ruthanne Munro, Jeanne Poli (friend of Barbara Tierney), Lauren Snyder (granddaughter of LouGene and Jim Hemphill), Dan Wilson (nephew of Mavis and Kenny Stott)

**ABBOTSWOOD:** Margaret Pittman

**UNIHEALTH/THE OAKS:** Betsy Roberts

**THE COVINGTON:** Annie Woodruff

**BRIGHTON GARDENS:** Jo Gilmore

**SUNRISE REHAB:** Dot Gebbie

**CRABTREE VALLEY REHAB:** Bonnie Carter, Richard Lentz

*Thank you!*

Our heartfelt thanks to our church family for all the cards, visits, and meals from the Deacons while Dot has been at Sunrise Assisted Living. God bless you all.

—Jack and Dot Gebbie



## Meals on Wheels

The next time that WBPC is responsible for delivering *Meals on Wheels* is Monday, September 29. Please call or email Marcia Bennett if you would like to help deliver meals. It is a worthwhile adventure!

## Books Needed for Middle Schoolers

We have a special request to ask on behalf of our evening nursery staff member, Julie Treadwell. Julie is a Language Arts Department Chair and a middle school English teacher. Julie teaches an underserved student population and has been trying to increase her classroom library for her students. She is particularly interested in middle school age range books. If you know of anyone who might like to purge some books, Julie would love to receive them. Donations of books appropriate for middle school students can be left in the church office. Julie tries so hard to provide for her students and it would be great if we could help!

## Recently Your Session

- Approved Sarah Wetherby to serve as a commissioner to the July 22 Stated Meeting of the Presbytery of New Hope.
- Received Linda Brinkworth and Christina and Bobby Rush into membership.
- Welcomed Betty back from sabbatical.

## WBPC Financial Report

	<u>JULY 2014</u>	<u>Year to Date</u>
Pledges	\$ 24,568.00	198,074.86
Open	1,962.04	13,656.54
Church School	41.00	558.99
<b>Total Offering</b>	<b>26,571.04</b>	<b>212,290.39</b>
Prior Receipts		106.18
Expenses	<u>27,583.43</u>	<u>214,507.51</u>
<b>Net Total</b>	<b>\$ (1,012.39)</b>	<b>(2,110.94)</b>